

# MEDIA PREPARATION ALL IN ONE AUTOMATION

 StepUpYourLab

2026

 ALLIANCE  
BIO EXPERTISE



## AUTOMATED MEDIA PREPARATION

### PREPARE

- Benefits of the automation ..... 3
- **MEDIAWEL 10<sup>®</sup>** - Media Preparator 10L ..... 4
  - Features ..... 5 - 6
- **MEDIAWEL 30<sup>®</sup>** - Media Preparator 30L ..... 7
  - Features ..... 8 - 9
- **MEDIAWEL 50<sup>®</sup>** - Media Preparator 50L ..... 10
  - Features ..... 11 - 12
- Traceability ..... 13

### DISPENSE

- **DISTRIWEL 440<sup>®</sup>** - Petri Dish Filler ..... 14
  - Features ..... 15 - 16
- **MINIMA<sup>®</sup>** - Petri Dish Wrapper ..... 17
- **DOSYWEL UPI<sup>®</sup>** - Peristaltic Pump ..... 18 - 19
  - Features ..... 20 - 21
- **POLYWEL UP<sup>®</sup>** - Tubes and Bottles Filler ..... 22 - 23
  - Features ..... 24 - 25

### FEED

- **MEDIAFEED<sup>®</sup>** - Dehydrated Media ..... 26 - 31

1

### Prepare the media

Diluent & Agar

MEDIAWEL®



Compliant with :



ISO 7218 - 5.7.1 : A media preparator is primarily designed for the sterilization of large volumes of media (>1L). It consists of a heating vessel, a water jacket, and a continuous agitation device [...] and is equipped with a thermometer, a pressure gauge, a timer, and a safety valve [...] with a safety lock to prevent opening above 80°C.

2

### Distribute the media

Diluent & Agar

DISTRIWEL® - POLYWEL® - DOSYWEL® - DILUWEL®



## ALL IN ONE MEDIA PREPARATION :

### SIMPLIFIED PROCESS



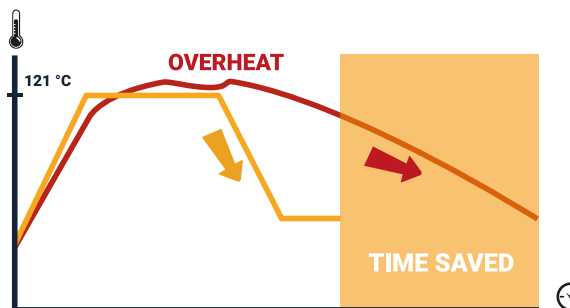
AUTOCLAVE

VS



MEDIAWEL®

### FAST COOLING SYSTEM



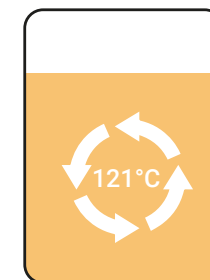
AUTOCLAVE — MEDIAWEL® —

### BETTER HOMOGENEITY



AUTOCLAVE

VS



MEDIAWEL®

# MEDIAWEL 10<sup>®</sup>

NEW GENERATION MEDIA PREPARATOR

## High performances :

- Standardized media : 150 programs available
- Temperature : 16 - 125 °C (± 0.5 °C)
- Optimum media homogeneity
- From 1 to 10 liters of media
- Cycle time : 50 - 75 min\*

\* 2-step cycle: sterilization at 121°C for 15 minutes, followed by dispensing at 42°C



## Secure process :

- Traceability : e-TRACE<sup>®</sup> technology
- 0.2 µm filtration : Bactystopper<sup>®</sup>
- Safety cover & lid : locked above 80°C
- Audio & multicolored visual alarm

## Ergonomic :

- Easy to move : trolley available
- Designed for user comfort
- User friendly interface
- Easy cleaning





## Perfect homogeneity

**Double magnetic stirring blade :**  
Large surface for an optimum temperature & consistence homogeneity



## Safety first

The device is locked above 80°C with a special lid with 12 hooks. Safety pressure valve. ASME certification



## Optimised mobility



Disengage and move the unit in seconds with the **Quick Water Connection Kit**. Simply slide it under the bench thanks to the trolley !



## Easy cleaning

Easy to remove and lightweight bucket: 1530g. **Ideal for cleaning.**



## User friendly



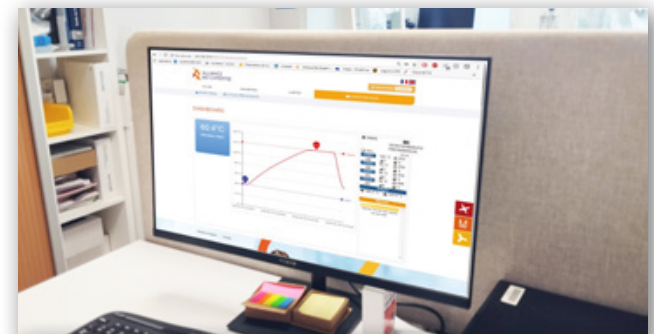
Intuitive 7" glove friendly touchscreen and multicolored led indicators



## Full Traceability



Easy export of data via USB interface, ticket printer and real time data monitoring **Labpage®**. Audit trail compliant with 21 CFR Part 11.



**Delivered with the MEDIAWEL 10 :** USB key with user manual and quality report, Bucket, Double magnetic stirrer, Sampling tube (MEDW2103), Drain plug, Draining basin, Stirrer bearing kit, Bactystopper - Calibrated sterile carded cotton x50 (MEDW3003), Inlet and outlet water tubing (4 m) + 4 tubing clamps (MEDW4012), 3 Months free access to «Real time data monitoring LICENSE»

## TECHNICAL DATA SHEET

<b>Capacity</b>	1-10L
<b>Sterilization temperature</b>	From 16 to 125 °C
<b>Sterilization time</b>	From 1 to 99 min
<b>Distribution temperature</b>	From 16 to 80°C
<b>Temperature accuracy</b>	± 0.5°C
<b>Remaining volume</b>	15 ml
<b>Addition cap</b>	✓ and the possibility to use septum
<b>Traceability</b>	eTRACE® Module integrated, USB data export (PDF/CSV)
<b>Traceability WIFI/Ethernet (optional)</b>	Labpage® dashboard. Real time data monitoring, data storage on SD card (up to 10 000 cycles)
<b>CFR21 Part11</b>	User management with password, audit trail, data integrity (non-erasable, non-editable data) & automatic operator logout
<b>Lid locking</b>	Easy and safe (with 12 hooks)
<b>Delayed start</b>	✓
<b>Temperature probe</b>	1 PT100 probe
<b>Pressure monitoring</b>	1 pressure gauge + 1 pressure switch
<b>Safety pressure release</b>	1.7 Bar safety valve
<b>Adaptable dispensers</b>	8 mm
<b>Continuous homogenization</b>	✓
<b>Touchscreen</b>	Tactile, LCD 7" glove friendly
<b>Alarm</b>	Audio and multicolored visual alarm
<b>Compacity</b>	Easily slides under the bench, optional trolley available
<b>Robustness</b>	Antishock body (ABS PC PLASTIC)
<b>Bucket and vessel</b>	Vessel : stainless steel AISI 316L - Bucket : stainless steel AISI 304
<b>Programs</b>	150
<b>Dimensions (W x D x H)</b>	535mm x 620mm x 515mm
<b>Trolley dimensions (W x D x H)</b>	645mm x 660mm x 705mm
<b>Weight</b>	63kg
<b>Power supply</b>	230V (+/- 10%) – 16A – 50/60Hz – 3600 W
<b>Country of origin</b>	France - European Union
<b>Warranty</b>	1 year

# MEDIAWEL 10®

**ABE  
LIVE**

Watch a full demonstration :



# MEDIAWEL 30<sup>®</sup>

NEW GENERATION MEDIA PREPARATOR

## High performances :

- Standardized media : 150 programs available
- Temperature : 16 - 125 °C (± 0.5 °C)
- Optimum media homogeneity
- From 2.5 to 30 liters of media
- Cycle time : 75 - 90 min\*

\* 2-step cycle: sterilization at 121°C for 15 minutes, followed by dispensing at 42°C



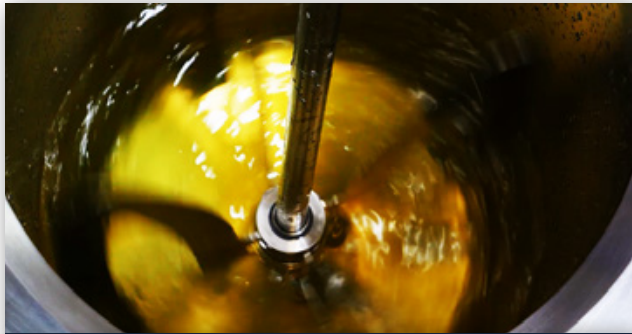
## Secure process :

- Traceability : e-TRACE<sup>®</sup> technology
- 0.2 µm filtration : Bactystopper<sup>®</sup>
- Safety valve for pressure release
- Audio & multicolored visual alarm
- Antishock body : ABS PC PLASTIC

## Ergonomic :

- Easy to move : 4 large medical wheels
- Designed for user comfort
- User friendly interface
- Easy cleaning





## Better homogeneity

Quadruple magnetic stirring blade :  
Large surface for an optimum  
temperature homogeneity



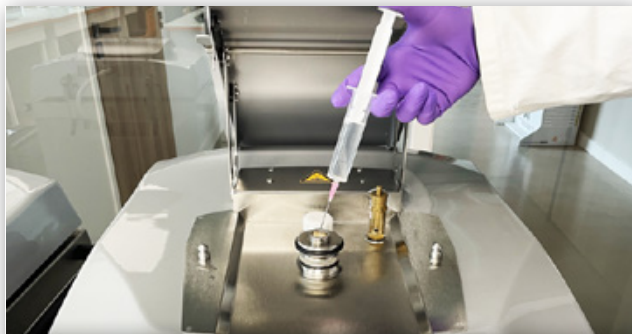
## Robust design

The equipment body is  
shock-resistant thanks to its  
ABS PC PLASTIC design



## Optimised cycle preparation

Avoid volatile powder with the Dust  
Cover & speed up the water filling  
with Automatic Doser



## Supplement step

All MEDIAWEL can fully integrate  
supplement addition : specific  
supplement programs & specific  
addition caps with or without septum



## Easy cleaning

No heavy vessel to lift !  
Fast draining mechanism and smooth  
surfaces with no right angles



## Full Traceability

Easy export of data via USB  
interface, ticket printer and real  
time data monitoring Labpage®.  
Audit trail compliant with  
21 CFR Part 11.



**Delivered with the MEDIAWEL 30 :** User Manual, Control certificate, Large magnetic stirrer (MEDW2008), Sampling tube (MEDW2009), Draining plug (MEDW2010), Sampling nozzle seals x2 (MEDW4011), Sampling nozzles x2 (MEDW2003 : Ø 12mm + MEDW2004: Ø 6.4mm), Inlet and outlet water tubing (4 m) + 4 tubing clamps (MEDW4012), Decompression filters x2 (MEDW3001), Bactystopper - Calibrated sterile carded cotton x50 (MEDW3003), Sliding washer stirrer axis x2 (MEDW4003), Sampling nozzle seals x2 (MEDW4011), USB key, 3 Months free access to the Labpage «Real time data monitoring LICENCE»

## TECHNICAL DATA SHEET

Capacity	From 2.5 to 30 liters
Sterilization temperature	From 16 to 125°C
Sterilization time	From 1 to 99 min
Distribution temperature	From 16 to 80°C
Temperature accuracy	± 0.5°C
Remaining volume	<100ml
Addition cap	✓ and the possibility to use septum
Traceability	eTRACE® Module integrated, USB data export (PDF/CSV)
Traceability WIFI/Ethernet (optional)	Labpage® dashboard. Real time data monitoring, data storage on SD card (up to 10 000 cycles)
CFR21 Part11	User management with password, audit trail, data integrity (non-erasable, non-editable data) & automatic operator logout
Temperature probe	3 probes (1 standard, 1 in option and 1 for calibration)
Safety pressure release	1.7 Bar safety valve
Dispensing port	Adapters for tubes of 6.4mm /12mm (8mm and 17mm available in option)
Continuous homogenization	✓
Touchscreen	Tactile, LCD 7" glove friendly
Alarm	Audio and multicolored visual alarm
Cleaning	Trapdoor, easy access to the vessel
Mobility	Stable and easy to move : 4 large medical wheels
Robustness	Antishock body (ABS PC PLASTIC)
Vessel	Stainless steel AISI 316L
Programs	150
Weight	154kg
Dimensions (W x D x H)	630 x 735 x 1045mm
Power supply	<b>MEDW1001</b> : 400V +/- 10% three-phases (18A max per phase), 50/60 Hz 9000W +/-10% <b>MEDW1002</b> : 208V +/- 10% three-phases (28A max per phase), 50/60 Hz 7400W +/-10% (for 110/120V countries only, such as US, Canada, Central America)
Country of origin	France - European Union
Warranty	1 year

# MEDIAWEL 30®

**MEDIAWEL® key points in video :**



# MEDIAWEL 50<sup>®</sup>

NEW GENERATION MEDIA PREPARATOR

## High performances :

- Standardized media : 150 programs available
- Temperature : 16 - 125 °C (± 0.5 °C)
- Optimum media homogeneity
- From 5 to 50 liters of media
- Cycle time : 75 - 90 min\*

## Ergonomic :

- Easy to move : 4 large medical wheels
- Designed for user comfort
- User friendly interface
- Easy cleaning

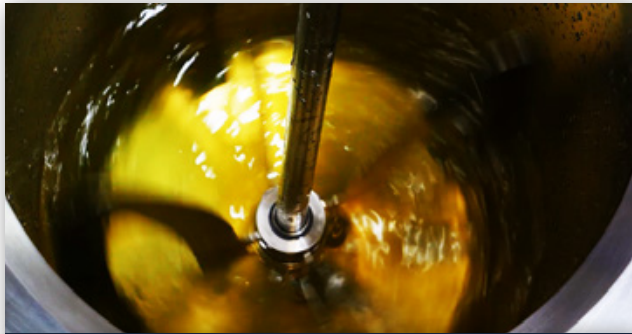
\* 2-step cycle: sterilization at 121°C for 15 minutes, followed by dispensing at 42°C



## Secure process :

- Traceability : e-TRACE<sup>®</sup> technology
- Bacteria filtration : Bactystopper<sup>®</sup>
- Safety valve for pressure release
- Audio & multicolored visual alarm
- Antishock body : ABS PC PLASTIC





## Better homogeneity

Double magnetic stirring blade :  
Large surface for an optimum  
temperature homogeneity



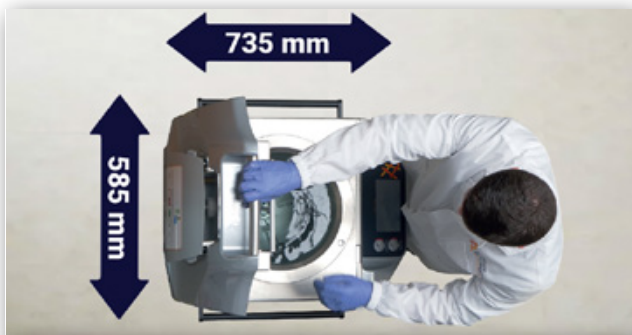
## Make it faster

Reach the perfect media distribution  
temperature quickly with  
the fast cooling system



## No waste media

The remaining volume is <100 mL



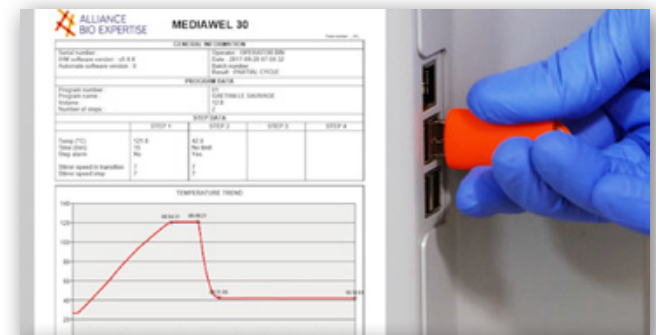
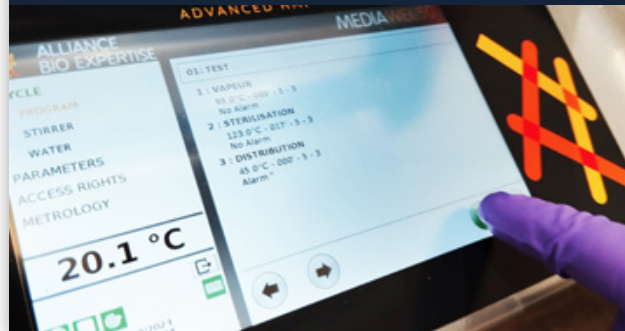
## Optimized compactness



Same footprint as a 30L media  
preparator ! Very good magnability  
with medical wheels

## User friendly

Intuitive 7" glove friendly  
touchscreen and multicolored  
led indicators



## Full Traceability



Easy export of data via USB  
interface, ticket printer and real  
time data monitoring Labpage®.  
Audit trail compliant with  
21 CFR Part 11.

**Delivered with the MEDIAWEL 50 :** USB stick with user Manual, control certificate, large magnetic stirrer (MEDW2008), sampling tube (MEDW2009), draining plug (MEDW2028), sampling nozzle seals x2 (MEDW4011), sampling nozzles x2 (MEDW2003 : Ø 12mm + MEDW2004: Ø 6.4mm), inlet and outlet water tubing (4 m) + 4 tubing clamps (MEDW4012), decompression filters x2 (MEDW3001), Bactystopper - calibrated sterile carded cotton x50 (MEDW3003), sliding washer stirrer axis x2 (MEDW4003), 3 Months free access to the Labpage «Real time data monitoring LICENCE»

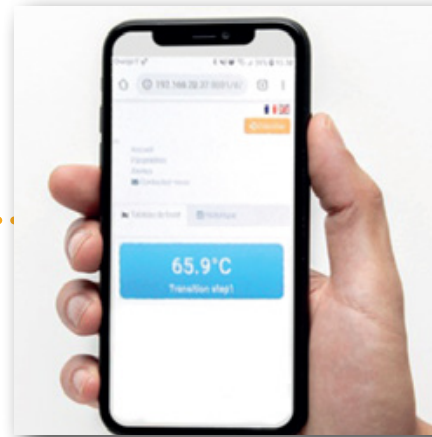
## TECHNICAL DATA SHEET

<b>Capacity</b>	From 5 to 50 liters
<b>Sterilization temperature</b>	From 16 to 125°C
<b>Sterilization time</b>	From 1 to 99 min
<b>Distribution temperature</b>	From 16 to 80°C
<b>Temperature accuracy</b>	± 0.5°C
<b>Remaining volume</b>	<100ml
<b>Addition cap</b>	✓ and the possibility to use septum
<b>Traceability</b>	eTRACE® Module integrated, USB data export (PDF/CSV)
<b>Traceability WIFI/Ethernet (optional)</b>	Labpage® dashboard. Real time data monitoring, data storage on SD card (up to 10 000 cycles)
<b>CFR21 Part 11</b>	User management with password, audit trail, data integrity (non-erasable, non-editable data) & automatic operator logout
<b>Temperature probe</b>	3 probes (1 standard, 1 in option and 1 for calibration)
<b>Safety pressure release</b>	1.7 Bar safety valve
<b>Dispensing port</b>	Adapters for tubes of 6.4mm /12mm (8mm and 17mm available in option)
<b>Continuous homogenization</b>	✓
<b>Touchscreen</b>	Tactile, LCD 7" glove friendly
<b>Alarm</b>	Audio and multicolored visual alarm
<b>Cleaning</b>	Bottom drainage / cleaning evacuation
<b>Mobility</b>	Stable and easy to move : 4 large medical wheels
<b>Robustness</b>	Antishock body (ABS PC PLASTIC)
<b>Vessel</b>	Stainless steel AISI 316L
<b>Programs</b>	150
<b>Weight</b>	178kg
<b>Dimensions (W x D x H)</b>	630 x 735 x 1078 mm
<b>Power supply</b>	<b>MEDW1050 :</b> 400V +/- 10%, three-phases (31A max per phase), 50/60 Hz, 18700W +/- 10% <b>MEDW1051 :</b> 208V +/- 10%, three-phases (46A max per phase), 50/60 Hz, 14500W +/- 10% (for 110/120V countries only, such as US, Canada, Central America)
<b>Country of origin</b>	France - European Union
<b>Warranty</b>	1 year

## MEDIAWEL 50®



## ENSURE COMPLETE TRACEABILITY WITH YOUR MEDIAWEL



**FULL  
TRACEABILITY**

### REAL TIME DATA MONITORING :

Labpage® Real time data monitoring through WIFI/Ethernet, connected to your PC / Smartphone / Tablet. Dashboard available for the live monitoring : program settings, temperature settings and current temperature, alarms and notifications.



### CYCLE MONITORING :

Cycles are automatically recorded and stored. Recall them one by one or sort them out by batch number, date, user... Each cycle can be exported as a PDF or CSV file to your USB key. SD card included with up to 10 000 cycles data storage.



# DISTRIWEL 440<sup>®</sup>

NEW GENERATION PETRI DISH FILLER

## High performances :

- Walkaway device :  
880 dishes in 1 hour
- Dispensing accuracy +/- 2%
- High production throughput
- Built-in Peltier cooling effect :  
reduces condensation  
and solidification time
- Compatible with 55 & 90 mm Petri dishes
- In-line blood addition (option)
- Plate Pouring System (option)



## Ergonomic :

- Designed for user comfort
- User friendly interface
- Integrated bubble level
- Easy cleaning

## Secure process :

- UV lamp for aerobiocontamination prevention
- Plexiglas cover
- Multicolored visual alarm






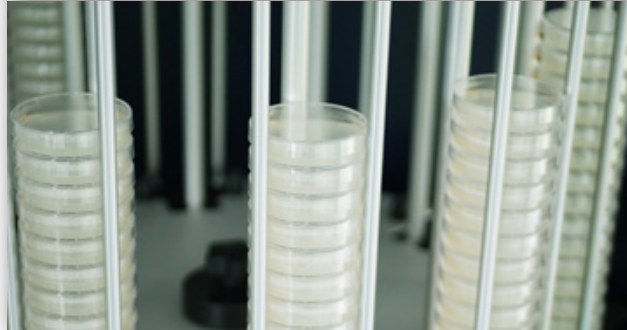
## Enhanced productivity

Fills 880 Petri dishes in 1 hour  
Full walkaway device



## 55mm Petri dish

The 55 version of the DISTRIWEL 440 is specifically designed to fill your 55 mm diameter Petri dishes, the standard size for microbiological water analysis. 



## Plate Pouring System

No more manual 8-shaped stirring with optional «Plate Pouring» mode



## Secure process

Avoid aerobiocontamination thanks to the UV lamp and plexiglas cover



## Touchscreen

Operating system dedicated to microbiologists, for a reactive and intuitive access to programs 



## Inkjet Printer



Print up to 15 characters (2 lines) on the side of the Petri dish with the LINX 8900 / DOMINO AX150 (optional)

**Delivered with the DISTRIWEL :** User Manual, Power supply cable, Tubing sets x2 (DISW2005), Certificate of conformance, FHC screws, Stainless steel washers M4 x6, Stainless steel washers M5 x6, Linx printer fitting kit (only in DISW1003)

**DISTRIWEL®**



## TECHNICAL DATA SHEET

<b>Petri dishes per hour</b>	Up to 880
<b>Distribution modes</b>	Automatic with carousel and manual
<b>Capacity</b>	440 Petri dishes
<b>Fast cooling</b>	Built-in Peltier effect
<b>Contamination prevention</b>	Built-in UV lamp
<b>Distribution speed</b>	From 30 to 300 RPM
<b>Distribution accuracy</b>	± 2%
<b>Distribution volume</b>	1 - 99ml
<b>Stack plates function</b>	✓
<b>Peristaltic pump</b>	Integrated pump (double pump in option)
<b>Programs</b>	150
<b>Touchscreen</b>	Tactile, LCD 7" glove friendly
<b>Traceability</b>	Ink jet printer on the Petri dish sides (also possible from the bottom of the dish, on demand)
<b>USB</b>	✓
<b>Ethernet</b>	✓
<b>Footswitch (for manual distribution)</b>	✓ (option)
<b>Dimensions (W x D x H)</b>	785 x 690 x 940 mm
<b>Weight</b>	48 kg
<b>Power supply</b>	115 or 230V ±10% - 50/60Hz - 3A max - 150W
<b>Country of origin</b>	France - European Union
<b>Warranty</b>	1 year

## CONFIGURATIONS

<b>DISW1001P</b>	Distriwel with blood addition kit
<b>DISW1001X</b>	Distriwel with LINX printer kit
<b>DISW1001XP</b>	Distriwel with blood addition + LINX printer kit
<b>DISW1001S</b>	Distriwel with plate pouring system

# MINIMA<sup>®</sup>

PETRI DISH WRAPPER

## **Pack your Petri dishes :**

- Adequate film : optimal solution to avoid condensation
- 10 predefined programs
- Ideal for 10-plates packs :  
**1 column of 10 or 2 columns of 5**



## TECHNICAL DATA SHEET

<b>Wrapping film (purchased separately)</b>	Polyolefin rolls delivered by 6 rolls of 1250m - 15µm - ø 200mm
<b>Power supply</b>	200/230V - 1.2 KW
<b>Dimensions with open lid</b>	930 x 550 x 580 mm
<b>Dimensions with closed lid</b>	930 x 550 x 370 mm
<b>Weight (net/gross)</b>	36/48 kg



Order it with your **DISTRIWEL<sup>®</sup>**



CE





DOSYWEL UP! is a multi-functional compact peristaltic pump, that provides a quick and accurate way of filling containers with agar, and any diluents.

- ✓ Precise
- ✓ Time saving
- ✓ Standardized
- ✓ Automatic traceability
- ✓ Lightweight and user-friendly

### Step up your lab with automation !

1

#### Prepare the media or diluent



MEDIAWEL®

ISO  
11133

4.5.4 : The medium shall be poured into Petri dishes so as to obtain a depth of at least 3 mm. For 90 mm diameter dishes, 18 ml to 20 ml of medium are required.

2

#### Distribute the media or diluent



DOSYWEL®

ISO  
7218

Culture media shall be distributed in a clean and uncontaminated environment. Use distribution methods that minimize the risk of contamination [...] The preparation conditions (temperature, stirring, etc.) must be controlled and documented.

# DOSYWEL UP!®

NEW GENERATION PERISTALTIC PUMP

 StepUpYourLab

## Multi-modes :

- Dosing (with defined volume)
- Dispense with a fixed flow rate (for ex: 100L/min)
- Multidose (with intervals) & Footpedal
- Continuous distribution (Start/Stop)
- Concentrated media management
- Fast mode with 8mm tubing

## Ergonomic :

- User friendly interface
- Light : 3.1kg





## Semi-automatic distribution

Set up your lab to gain in efficiency. Use a time interval, a footswitch or a hand dispenser to limit handling



## Compact & light



Light weight (3.1kg) and small footprint : optimise your bench space and easily lift it for cleaning



## Calibration



Set up a calibration at the beginning of your program or after a defined number of doses dispensed to ensure a perfect distribution precision



## Fast & Accurate

Up to 1 second for 9ml with 98% accuracy using 3.2mm tubing



## Touchscreen



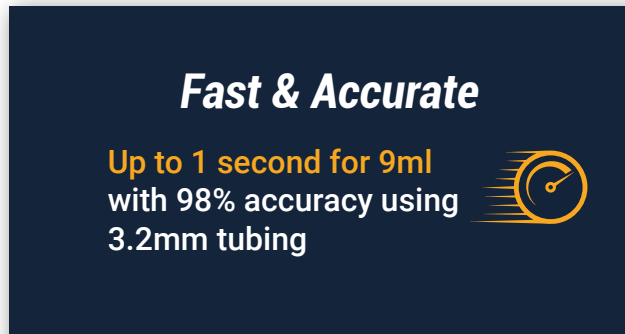
Operating system dedicated to microbiologists, for a reactive and intuitive access to programs



## Upgradeable



Need to scale up your production ? Boost efficiency : simply plug your DOSYWEL UP to the POLYWEL UP!



**Delivered with the DOSYWEL UP!**

*User Manual, power chord, set of 3.2mm tubing with dispensing nozzle (ref : DOSW2003), quality control certificate and metrology report.*

**DOSYWEL UP!**<sup>®</sup>

## TECHNICAL DATA SHEET

<b>Distribution</b>	Manual, automatic or with footswitch
<b>Adjustable volume</b>	1 to 9999.9 mL
<b>Adjustable speed</b>	5 - 100% / 10-450 rpm
<b>Calibration</b>	At the beginning of a cycle and/or after a selected number of doses
<b>Dispensing modes</b>	Dosing - Continuous - Flow rate
<b>Interval</b>	0.1 to 100 seconds
<b>Rotation</b>	Clockwise or Anticlockwise
<b>Number of programs</b>	Unlimited
<b>Traceability</b>	Ticket printer - USB key
<b>Flow rate</b>	1.8L / min maximum
<b>Internal tube diameter</b>	1.6mm / 3.2mm / 4.8 mm / 6.4mm / 8mm
<b>Compacity (W x D x H)</b>	160 x 255 x 201 mm
<b>Weight</b>	3.1kg
<b>Electricity supply / Power</b>	100 - 250V / 50 - 60 Hz / 120W
<b>Warranty</b>	1 year
<b>Country of origin</b>	France - European Union

Set up your workflow with a **footswitch** :



**REF : DILW2013**

1

## Prepare the media

Diluent & Agar



MEDIAWEL®

Compliant with :



*ISO 7218 - 5.7.1 : A media preparator is primarily designed for the sterilization of large volumes of media (>1L). It consists of a heating vessel, a water jacket, and a continuous agitation device [...] and is equipped with a thermometer, a pressure gauge, a timer, and a safety valve [...] with a safety lock to prevent opening above 80°C.*

2

## Dispense the media

Diluent & Agar



DISTRIWEL® - POLYWEL® - DOSYWEL® - DILUWEL®

## UPGRADE YOUR DOSYWEL UP!

**Need to scale up your production?**

*Boost efficiency with automated media dispensing :*

Simply plug your DOSYWEL UP! to the POLYWEL UP!



# POLYWEL UP<sup>®</sup>

AUTOMATED TUBES AND BOTTLES FILLER

## High performances :

- Capacity : more than 1000 tubes ( $\varnothing 18\text{mm}$ ) or 40 bottles (1L -  $\varnothing 100\text{mm}$ )
- Fills 1000 tubes in 30 minutes (9ml tubes)
- Accuracy : 98%
- Adapted to all types of containers (tubes, bottles, jars...)
- Unlimited programs

## Ergonomic :

- Autoclavable racks
- Light indicators
- Easy cleaning

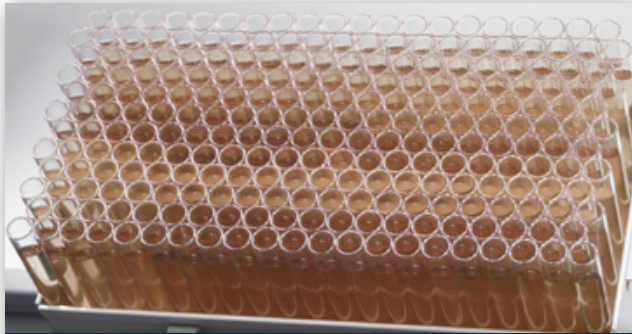
## Adaptable :

- Use your own racks
- Different distribution nozzles available :

$\varnothing 1.6\text{mm}$  -  $\varnothing 3.2\text{mm}$  -  $\varnothing 6.4\text{mm}$  -  $\varnothing 8\text{mm}$

ACCURACY  SPEED





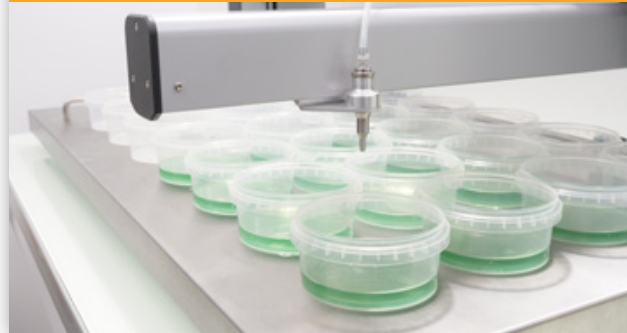
### Enhanced productivity

Fills 1000 tubes in 30 minutes in stand-alone mode.  
Full walkaway device



### Adaptable

The automated arm height is adjustable and will adapt to different container sizes



### Precise distribution

Dispense with an accuracy of 98% thanks to the device's calibration



### High-quality racks



Take advantage of autoclavable racks to be loaded directly from its original package

### Easy cleaning



The surface of the device is made of stainless steel, which is easy to clean



### Light indicators



Be easily informed of the end of the cycle with the flashing lights on the sides of the device

### Delivered with :

#### **POLYWEL UP! - Ref : POLW1201**

*User manual, power chord, set of tubing 3.2 mm with dispensing nozzle (POLW2008), Large Rack (POLW2002)*

#### **POLYWEL UP! + DOSYWEL UP! BUNDLE - Ref : POLW1201D**

*POLYWEL UP! (POLW1201), User manual, power chord, set of tubing 3.2 mm with dispensing nozzle (DOSW2003)*

## TECHNICAL DATA SHEET

<b>Dispensing volume</b>	From 1 to 9999.9ml
<b>Adjustable speed</b>	5 - 100% / 10-450 rpm
<b>Dispensing time for 1000 tubes (9ml)</b>	30 minutes
<b>Tubes per rack (Ø18mm)</b>	Large rack : 250 Small rack : 120
<b>Number of programs</b>	Unlimited
<b>Tubing diameters</b>	1.6 mm / 3.2 mm / 6.4 mm / 8mm
<b>Flow rate</b>	1.2 L/min maximum (in POLYWEL UP mode)
<b>Calibration</b>	At the beginning of a cycle and/or after a selected number of doses
<b>Maximum size of containers</b>	Height : 223 mm
<b>External dimensions of racks (W x D x H)</b>	<b>Large rack</b> : 440mm x 220mm x 110 mm / <b>Small rack</b> : 240mm x 220mm x 110mm
<b>Internal dimensions of racks (W x D)</b>	<b>Large rack</b> : 390mm x 195mm / <b>Small rack</b> : 190mm x 190mm
<b>Dimensions POLYWEL UP! (W x D x H)</b>	1156mm x 635mm x 620mm
<b>Power supply POLYWEL UP!</b>	120 - 240V (± 10 %) 50 - 60 Hz / 120W
<b>Power supply DOSYWEL UP!</b>	120 - 240V (± 10 %) 50 - 60 Hz / 120W
<b>Warranty</b>	1 year
<b>Country of origin</b>	France - European Union

# POLYWEL UP!®





**MEDIA FEED**  
 Accurately PRE WEIGHED

**Buffered Peptone Water**  
 Eau Peptonée Tamponnée  
 Ref: MCFW3001

0092 - Quantity for 30L  
 100g - Quantity pour 30L

Expiry: 28.04.2025  
 Date de validité: 28.04.2025

Batch n°: 109049

Formula in g/l

Casamino peptone	15.0
Sodium chloride	5.0
Sodium phosphate (anhydrous)	3.5
Potassium phosphate	1.5

Final pH: 7.0 ± 0.2 at 25°C

**ALLIANCE BIO EXPERTISE**

**MEDIA FEED**  
 Accurately PRE WEIGHED

**Tryptone Soya Agar**  
 Bouillon Fraser Demi  
 Ref: MCFW3002

1.048 5g - Quantity for 30L  
 1048.5g - Quantité pour 30L

Expiry: 28.04.2024  
 Date de validité: 28.04.2024

Batch n°: 109256

Formula in g/l

Soy Peptone	5.000
Tryptone	5.000
Meat Extract	5.000
Yeast Extract	20.000
Sodium chloride	5.000
Sodium phosphate	5.000
Potassium phosphate	3.000
Sodium chloride	3.000

Final pH: 7.0 ± 0.2 at 25°C

**TSB 100ml**  
 Art. 520.5100  
 2021-Jan-23  
 002987 20°C  
 www.pharm-labor.de 03452

**REF AW TSA068**  
**GELOSE TRYPTONE SOJA**  
 (tryptic soy agar)  
 2021-01-23  
 002987  
 AMEL INTERNATIONAL 41130 BLANZ

**ALLIANCE BIO EXPERTISE**

**DSHB3009 500 g**  
**R2A AGAR (Ph.Eur.)**

Solid medium for the enumeration of heterotrophic microorganisms in treated waters, according to Pharmaceutical Harmonized Methods.

AGAR R2A (farm. Eur.)  
 R2A AGAR  
 Gelose R2A  
 Agar R2A (Ph. Eur.)

LOT: 107792 9/2022

**PharmMedia**  
 Dr. Moller GmbH

**CASO+LTH CS**  
**TSA+LTH CS**

REF: 400

LOT: 004344

2022-Feb-19

## PRODUCT CODE AND DESCRIPTION

<b>DSHB3001</b>	TRYPTIC SOY AGAR - TSA - 500G	<b>DSHB3021</b>	D-CYCLOSERINE SELECTIVE SUPPLEMENT - 10 x 250ML
<b>DSHB3002</b>	TRYPTIC SOY BROTH TSB - 500G	<b>DSHB3022</b>	DEOXYCHOLATE LACTOSE AGAR - 500G
<b>DSHB3003</b>	SABOURAUD DEXTROSE AGAR - SDA - 500G	<b>DSHB3023</b>	KLIGER AGAR - 500G
<b>DSHB3004</b>	BUFFERED PEPTONE WATER PH7 - BPW - 500G	<b>DSHB3025</b>	MULLER-KAUFFMANN TETRATHIONATE BROTH BASE - 500G
<b>DSHB3005</b>	UREA AGAR - 500G	<b>DSHB3026</b>	ENRICHMENT ENTEROBACTERIACEAES BROTH - EE - 500G
<b>DSHB3006</b>	UREA SUPPLEMENT 40% - 1 x 125ML	<b>DSHB3027</b>	MRS AGAR (MAN, ROGOSA AND SHARPE) - 500G
<b>DSHB3007</b>	MAC CONKEY AGAR - 500G	<b>DSHB3028</b>	MYP BACILLUS CEREUS AGAR BASE - 500G
<b>DSHB3008</b>	MAC CONKEY BROTH ISO/EUR.PHARMA - 500G	<b>DSHB3029</b>	GLUCOSE BROMOCRESOL PURPLE AGAR - 500G
<b>DSHB3009</b>	R2A AGAR - 500G	<b>DSHB3030</b>	OXYTETRACYCLIN GLUCOSE YEAST EXTRACT AGAR BASE - OGYE - 500G
<b>DSHB3010</b>	CETRIMIDE AGAR PSEUDOMONAS SELECTIVE - 500G	<b>DSHB3031</b>	OXFORD AGAR BASE - 500G
<b>DSHB3011</b>	YLOSE LYSINE DEOXYCHOLATE MODIFIED AGAR - 500G	<b>DSHB3032</b>	PALCAM AGAR BASE - 500G
<b>DSHB3012</b>	CHAPMAN MANNITOL SALT AGAR - MSA - 500G	<b>DSHB3033</b>	BOLTON ENRICHMENT BROTH BASE - 500G
<b>DSHB3013</b>	NUTRIENT AGAR - 500G	<b>DSHB3034</b>	PLATE COUNT AGAR - PCA - 500G
<b>DSHB3014</b>	ESCHERICHIA COLI BROTH - 500G	<b>DSHB3035</b>	POTATO DEXTROSE AGAR (EUR. PHARM.) - PDA - 500G
<b>DSHB3015</b>	RILLIANT GREEN BILE 2% BROTH - 500G	<b>DSHB3036</b>	SABOURAUD BROTH - 500G
<b>DSHB3016</b>	BRAIN HEART INFUSION AGAR - BHI - 500G	<b>DSHB3037</b>	SABOURAUD CHLORAMPHENICOL AGAR - SDA WITH CHLORAMPHENICOL - 500G
<b>DSHB3017</b>	BLOOD AGAR BASE COLUMBIA - 500G	<b>DSHB3038</b>	TRYPTONE BILE GLUCURONIC AGAR - TBX - 500G
<b>DSHB3018</b>	LISTERIA ENRICHMENT BROTH FRASER BASE - 500G	<b>DSHB3039</b>	TCBS AGAR (ISO) - 500G
<b>DSHB3019</b>	RPF SUPPLEMENT - 10 x 60MM	<b>DSHB3040</b>	THIOGLYCOLATE BROTH (USP ALTERNATIVE) - 500G
<b>DSHB3020</b>	PSEUDOMONAS SELECTIVE SUPPLEMENT - CFC - 10 x 500ML	<b>DSHB3041</b>	0,1% PEPTONE SALT BROTH - 500G



## PRODUCT CODE AND DESCRIPTION

<b>DSHB3042</b>	TRYPTOSE SULFITE CYCLOSERINE AGAR - TSC - 500G	<b>DSHB3062</b>	PSEUDOMONAS GELOSE BASE AGAR - 500G
<b>DSHB3043</b>	VIOLET RED BILE GLUCOSE AGAR - VRBG (EUR.PHARMA) - 500G	<b>DSHB3063</b>	ALCALIN SALTY PEPTON WATER - 500G
<b>DSHB3044</b>	VIOLET RED BILE LACTOSE AGAR - VRBL - 500G	<b>DSHB3065</b>	POLYMYXIN B SELECTIVE SUPPLEMENT - 10 x 3G
<b>DSHB3045</b>	CHLORAMPHENICOL GLUCOSE AGAR - CGA - 500G	<b>DSHB3066</b>	OXYTETRACYCLIN SELECTIVE SUPPLEMENT - 10 x 3G
<b>DSHB3046</b>	BILE ESCULIN AZIDE AGAR - BEA - 500G	<b>DSHB3067</b>	LISTERIA SELECTIVE AGAR BASE - AL - 500G
<b>DSHB3047</b>	ENDO AGAR BASE - 500G	<b>DSHB3068</b>	BUFFERED CHARCOAL YEAST EXTRACT AGAR BASE - BCYE - 500G
<b>DSHB3048</b>	BRUCELLA BASE BROTH - 500G	<b>DSHB3069</b>	CYSTEINE LEGIONELLA SUPPLEMENT FOR BCYE AGAR - 5 VIALS
<b>DSHB3049</b>	FRASER SELECTIVE SUPPLEMENT - 10 x 500ML	<b>DSHB3070</b>	SELECTIVE SUPPLEMENT LEGIONELLA WITHOUT CYSTEINE - GVPC - 10 x 9G
<b>DSHB3050</b>	FRASER DEMI SELECTIVE SUPPLEMENT - 10 x 250ML	<b>DSHB3071</b>	SELECTIVE SUPPLEMENT FOR LISTERIA (OTTAVIANI & AGOSTI) - 10 x 3G
<b>DSHB3051</b>	OXFORD LISTERIA SELECTIVE SUPPLEMENT - 10 x 500ML	<b>DSHB3072</b>	SELECTIVE SUPPLEMENT FOR LISTERIA (OTTAVIANI & AGOSTI) - 10 x 24ML
<b>DSHB3052</b>	PALCAM SELECTIVE SUPPLEMENT - 10 x 500ML	<b>DSHB3073</b>	SLANETZ AND BARTLEY AGAR BASE - 500G
<b>DSHB3053</b>	BOLTON BROTH SELECTIVE SUPPLEMENT - 10 x 500ML	<b>DSHB3074</b>	TTC SUPPLEMENT - 1 x 100ML
<b>DSHB3054</b>	MUELLER HINTON AGAR - MH - 500G	<b>DSHB3075</b>	CYSTINE LACTOSE ELECTROLYT DEFICIENT AGAR - CLED - 500G
<b>DSHB3055</b>	RAPPAPORT VASSILIADIS SOJA BROTH - RVS - 500G	<b>DSHB3076</b>	GROWTH PROMOTION SUPPLEMENT - 5 VIALS
<b>DSHB3056</b>	COLUMBIA AGAR BASE (EUR. PHARM.) - 500G	<b>DSHB3077</b>	PLATE COUNT SKIM MILK AGAR - 500G
<b>DSHB3057</b>	MALT AGAR - 500G	<b>DSHB3078</b>	AB SELECTIVE SUPPLEMENT FOR LEGIONELLA - 10 VIALS
<b>DSHB3058</b>	LACTOSE SULFITE BROTH - 500G	<b>DSHB3079</b>	HEKTOEN ENTERIC AGAR - 500G
<b>DSHB3059</b>	NOVOBIOCIN SELECTIVE SUPPLEMENT - 10 x 500ML	<b>DSHB3080</b>	DIFFERENTIAL SUPPLEMENT FOR LISTERIA UVM II - 10 x 3G
<b>DSHB3060</b>	BAIRD PARKER AGAR BASE - 500G	<b>DSHB3081</b>	D-CYCLOSERINE SELECTIVE SUPPLEMENT - 10 VIALS
<b>DSHB3061</b>	SUPPLEMENT EGG YOLK FOR BAIRD PARKER AGAR - 1 x 100ML	<b>DSHB3082</b>	YEAST EXTRACT AGAR (ISO 6222) - 500G



## PRODUCT CODE AND DESCRIPTION

<b>DSHB3083</b>	BLOOD AGAR BASE - 500G	<b>DSHB3103</b>	ENTEROBACTER SAKAZAKII ISOLATION AGAR - 500G
<b>DSHB3084</b>	LACTOSE TERGITOL 7 AGAR - TTC - 500G	<b>DSHB3104</b>	SIMMONS CITRATE AGAR - 500G
<b>DSHB3085</b>	SALMONELLA SHIGELLA AGAR - SS - 500G	<b>DSHB3105</b>	LAURYL TRYPTOSE SULFATE BROTH - LST - 500G
<b>DSHB3086</b>	THIOGLYCOLATE FLUID MEDIUM (ACCORDING TO USP) - 500G	<b>DSHB3106</b>	VANCOMYCIN SELECTIVE SUPPLEMENT - 10 x 3G
<b>DSHB3087</b>	CHROMOGENIC AGAR FOR COLIFORM BACTERIA - CCA - 500G	<b>DSHB3107</b>	CHARCOAL CEFOPERAZONE DEOXYCHOCOLATE AGAR MODIFIED - CCDA - 500G
<b>DSHB3088</b>	DICHLORAN GYCEROL 18 AGAR BASE - DG18 - 500G	<b>DSHB3108</b>	YERSINIA SELECTIVE AGAR BASE - 500G
<b>DSHB3089</b>	DICHLORAN ROSE BENGAL CHLORAMPHENICOL AGAR - DRBC - 500G	<b>DSHB3109</b>	YERSINIA SELECTIVE SUPPLEMENT - 10 x 50MM
<b>DSHB3090</b>	ORANGE SERUM AGAR - 500G	<b>DSHB3110</b>	CAMPYLOBACTER CCDA SELECTIVE SUPPLEMENT - 10 VIALS
<b>DSHB3091</b>	CN SELECTIVE AGAR BASE FOR PSEUDOMONAS - 500G	<b>DSHB3111</b>	EOSIN METHYLENE BLUE AGAR - EMB - 500G
<b>DSHB3092</b>	SUPPLEMENT FOR CN SELECTIF AGAR - 10 x 3G	<b>DSHB3112</b>	GIOLITTI CANTONI BROTH - 500G
<b>DSHB3093</b>	GREEN BRILLIANT AND NOVOBIOCIN SELECTIVE SUPPLEMENT - 10 x 3G	<b>DSHB3113</b>	YERSINIA ENRICHMENT BROTH BASE (ITC) - 500G
<b>DSHB3094</b>	MAC CONKEY BROTH - 500G	<b>DSHB3115</b>	RAPPAPORT VASSILIADIS MODIFIED SEMI SOLID AGAR BASE - 500G
<b>DSHB3095</b>	GELATIN LACTOSE MEDIUM - 500G	<b>DSHB3116</b>	SOY PEPTONE AGAR - 500G
<b>DSHB3096</b>	MOBILITY NITRATE MEDIUM - 500G	<b>DSHB3117</b>	KING A AGAR - 500G
<b>DSHB3097</b>	DECARBOXYLASE LYSINE BROTH - 500G	<b>DSHB3118</b>	LISTERIA ENRICHMENT BROTH BASE - 500G
<b>DSHB3098</b>	TRIPLE SUGAR IRON AGAR - TSI - 500G	<b>DSHB3119</b>	PEPTONE FROM CASEIN (TRYPTONE) - 500G
<b>DSHB3099</b>	KING B AGAR - 500G	<b>DSHB3120</b>	SCHAEDLER BROTH - 500G
<b>DSHB3100</b>	CHLORAMPHENICOL SUPPLEMENT - 10 VIALS	<b>DSHB3121</b>	SELENITE BROTH - 500G
<b>DSHB3101</b>	TRYPTON WATER - 500G	<b>DSHB3122</b>	DNASE AGAR - 500G
<b>DSHB3102</b>	SHIGELLA BROTH BASE - 500G	<b>DSHB3123</b>	GC AGAR ENRICHED BASE - 500G



## PRODUCT CODE AND DESCRIPTION

<b>DSHB3124</b>	MANNITOL MOTILITY NITRATE FLUID MEDIUM - 500G	<b>DSHB3147</b>	SULFITE IRON AGAR - 500G
<b>DSHB3125</b>	MAC CONKEY AGAR NO. 2 - 500G	<b>DSHB3148</b>	SUPPLEMENT EGG YOLK - 500G
<b>DSHB3126</b>	DRIGALSKY LACTOSE AGAR - 500G	<b>DSHB3149</b>	BAT AGAR - 1 x 50ML
<b>DSHB3127</b>	AGAR BACTERIOLOGICA - 500G	<b>DSHB3150</b>	D/E NEUTRALIZING AGAR BASE - 500G
<b>DSHB3128</b>	YEAST EXTRACT - 500G	<b>DSHB3151</b>	TGETRYPTONE GLUCOSE EXTRACT AGAR - TGE - 500g
<b>DSHB3129</b>	MEAT EXTRACT - 500G	<b>DSHB3153</b>	AGAR BASE BURKHOLDERIA SELECTIVE - 500G
<b>DSHB3130</b>	TRYPTONE SULFITE NEOMYCIN AGAR - TSN - 500G	<b>DSHB3154</b>	MARINE AGAR - 500G
<b>DSHB3131</b>	POLYSORBATE 80 - 1 x 125ML	<b>DSHB3155</b>	TRYPTIC SOY BROTH IRRADIATED – TSB IRRADIATED - 500G
<b>DSHB3132</b>	PEPTONE FROM CASEIN, PANCREATIC - 500G	<b>DSHB3156</b>	SUPPLEMENT SELECTIF BURKHOLDERIA CEPACIA - BCSA - 10 x 3G
<b>DSHB3133</b>	BRILLIANT GREEN MODIFIED AGAR - GVB - 500G	<b>DSHB3157</b>	BROTH BASE MODIFIED EUGON LT - 500G
<b>DSHB3134</b>	TRYPTONE AND SOY YEAST EXTRACT AGAR - TSYE - 500G	<b>DSHB3158</b>	VCAT SELECTIVE SUPPLEMENT - 10 x 10ML
<b>DSHB3135</b>	PURPLE RHAMNOSE FERMENTATION AGAR - 500G	<b>DSHB3159</b>	SELECTIVE SUPPLEMENT LISTERIA FDA FIL/IDV - 10 x 3G
<b>DSHB3136</b>	BAT BROTH - 500G	<b>DSHB3160</b>	BRUCELLA SUPPLEMENT - 10 VIALS
<b>DSHB3137</b>	KENNER FECAL AGAR - KF AGAR - 500G	<b>DSHB3161</b>	SELECTIVE SUPPLEMENT NALIDIXIC ACID - 10 x 3G
<b>DSHB3138</b>	NON ANIMAL TRYPTONE SOY BROTH - TSB - 500G	<b>DSHB3162</b>	LINDEN GRAIN BROTH - 500G
<b>DSHB3140</b>	ANTIBIOTIC MEDIUM A pH 7,9 - 500G	<b>DSHB3163</b>	MICROBIAL CONTENT TEST AGAR - 500G
<b>DSHB3141</b>	ANTIBIOTIC MEDIUM B - 500G	<b>DSHB3164</b>	TSB + LECITHIN POLYSORBAT BROTH - 500G
<b>DSHB3144</b>	ANTIBIOTIC MEDIUM E - 500G	<b>DSHB3166</b>	SELECTIVE AGAR FOR PSEUDOMONAS AND AEROMONAS - 500G
<b>DSHB3145</b>	ANTIBIOTIC MEDIUM F (OR 6) - 500G	<b>DSHB3167</b>	MULLER HINTON BROTH - MH - 500G
<b>DSHB3146</b>	ANTIBIOTIC MEDIUM A - 500G	<b>DSHB3168</b>	ROTHER BROTH - 500G



## PRODUCT CODE AND DESCRIPTION

<b>DSHB3171</b>	MALT EXTRACT - 500G
<b>DSHB3176</b>	M17 AGAR - 500G
<b>DSHB3178</b>	BRAIN HEART INFUSION BROTH - BHI - 500G



## PRE-WEIGHED FORMAT

<b>MDFW3001</b>	PRE-WEIGHED DEHYDRATED MEDIA FOR 30L OF BUFFERED PEPTONE WATER
<b>MDFW3005</b>	PRE-WEIGHED DEHYDRATED MEDIA FOR 10L OF BUFFERED PEPTONE WATER



# TECHNICAL SUPPORT

- **Manufacturer's experience** : you benefit of the A.B.E. team's experience, 20 years in servicing automated laboratory equipment, with a multilingual competence !
- **Local network expertise** : your local distributor is a member of our exclusive network. Our partners were intensely trained at our premises in France but also abroad, in Europe, Asia, Africa, Middle East, and Americas. Our worldwide distributors are carefully selected for their service approach and their customer focus.
- **Availability & reactivity** : our team is reachable by email, zoom and telephone. Are you on the other side of the world ? We will do all it takes to bring you the expertise you need rapidly, and above all, relevantly !





**EQUIPEMENT - REAGENTS - CONSUMABLES**  
**ADAPTED FOR INDUSTRIAL MICROBIOLOGY LABORATORIES**



**A CONNECTED EQUIPMENT GENERATION**  
**FOR TRACEABILITY AND PRODUCTIVITY**



**MORE THAN 90 INTERNATIONAL DISTRIBUTORS**  
**TRAINED TO THE LATEST A.B.E. TECHNOLOGIES**



**A DEDICATED AND EXPERIENCED TEAM**  
**OF SERVICE ENGINEERS AND MICROBIOLOGISTS**



**REPRESENTED IN OVER  
90 COUNTRIES**